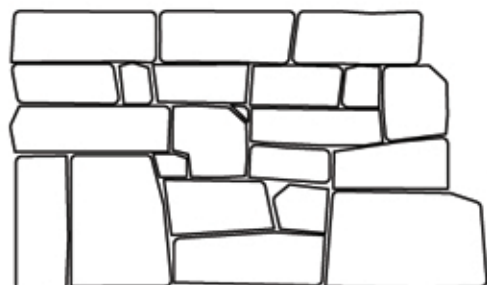
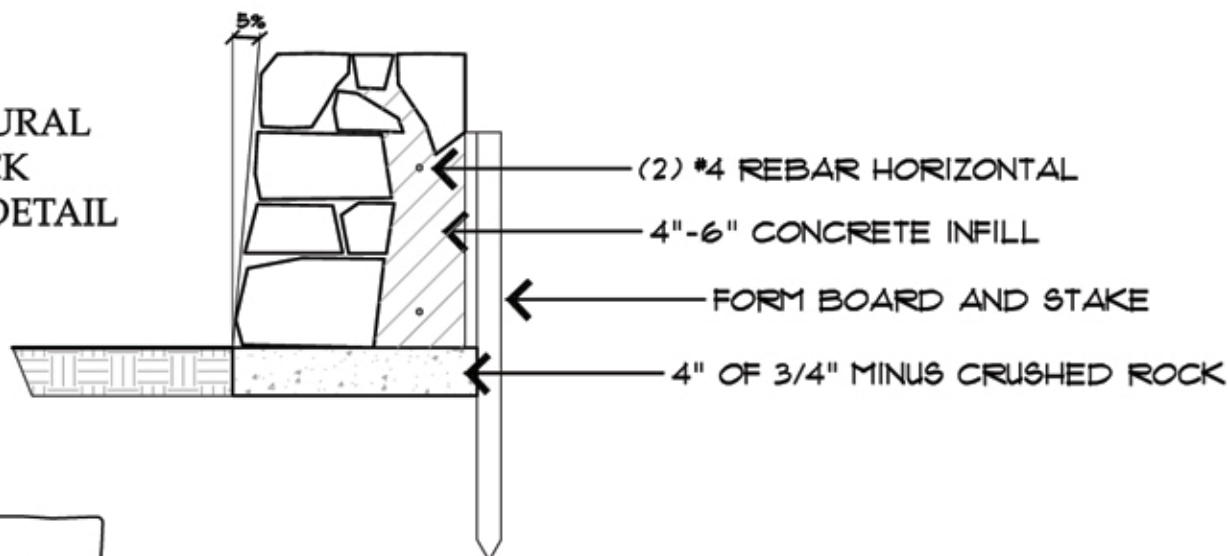
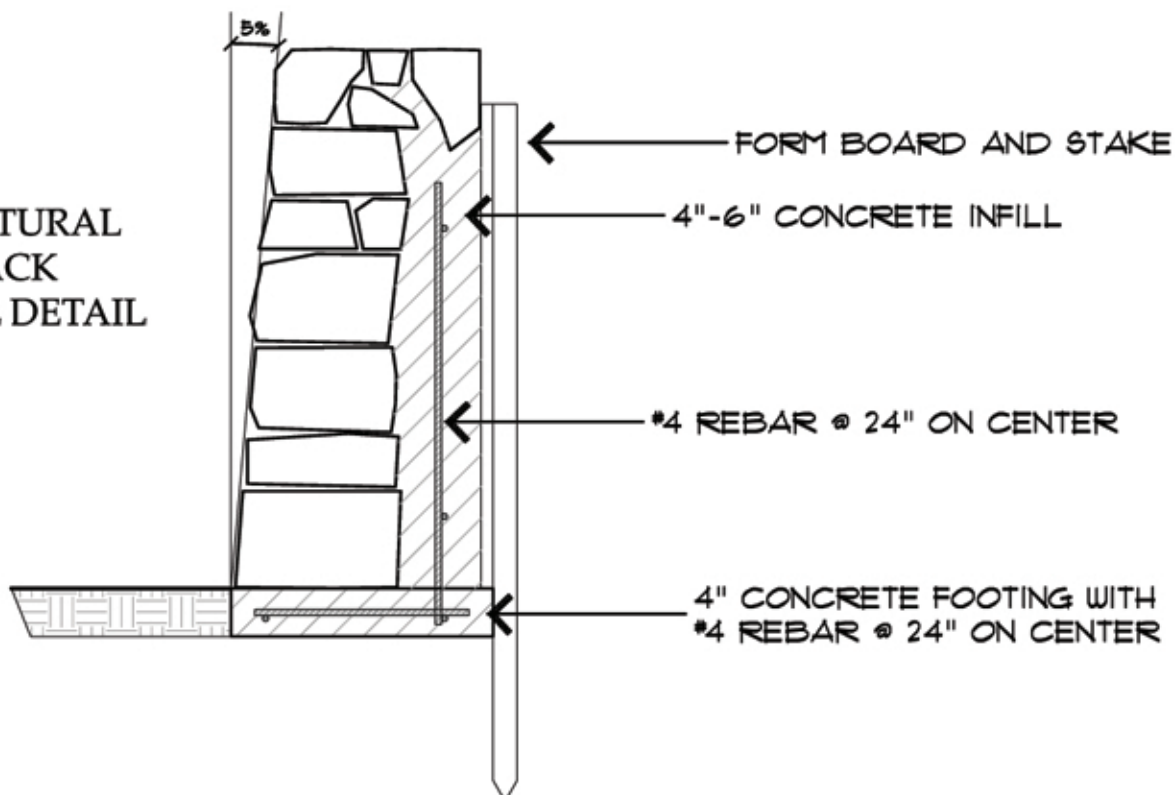


1'-2' STRUCTURAL DRystack STONEWALL DETAIL



'TWO OVER ONE/ ONE OVER TWO'
PATTERN

2'-4' STRUCTURAL DRystack STONEWALL DETAIL



PACIFIC STONESCAPE INC.

Suppliers of Natural Stone for Fine NW Homes and Gardens

Three locations to serve you:

5232 Salem Dallas Hwy (next to Chevron) Phone: (503) 586-9777

65 Ross Ln. Eugene (off River Ave. next to Beltline) Phone: (541) 607-9041

34004 Texas St. Albany (off Hwy 34 east of Corvallis) Phone: (541) 928-7678

We Deliver from the Cascades to the Coast!

www.pacificstonescape.com